

71-679
2-6-6
P.W. MAHONEY & B.J. BIGHAM

All L&S except
what with noted
to Jay Inv.
589-112

N

SCALE 1" = 300'

JANUARY 1, 1966
RELATIVE REPRESENTATION

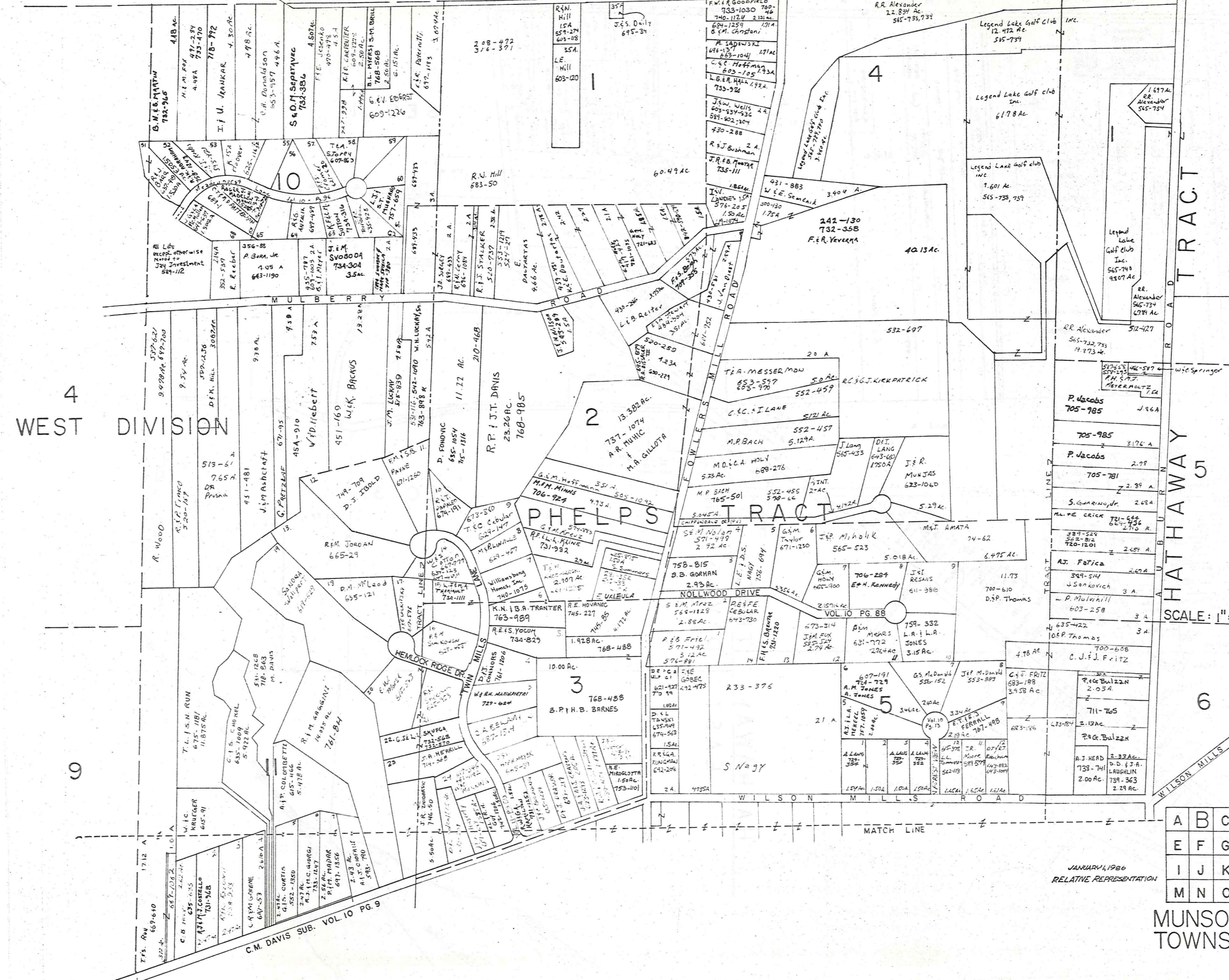
A	B	C	D
E	F	G	H
I	J	K	L
M	N	O	P

MUNSON TWP

CHARDON TOWNSHIP

4 WEST DIVISION

HATHAWAY TRACT



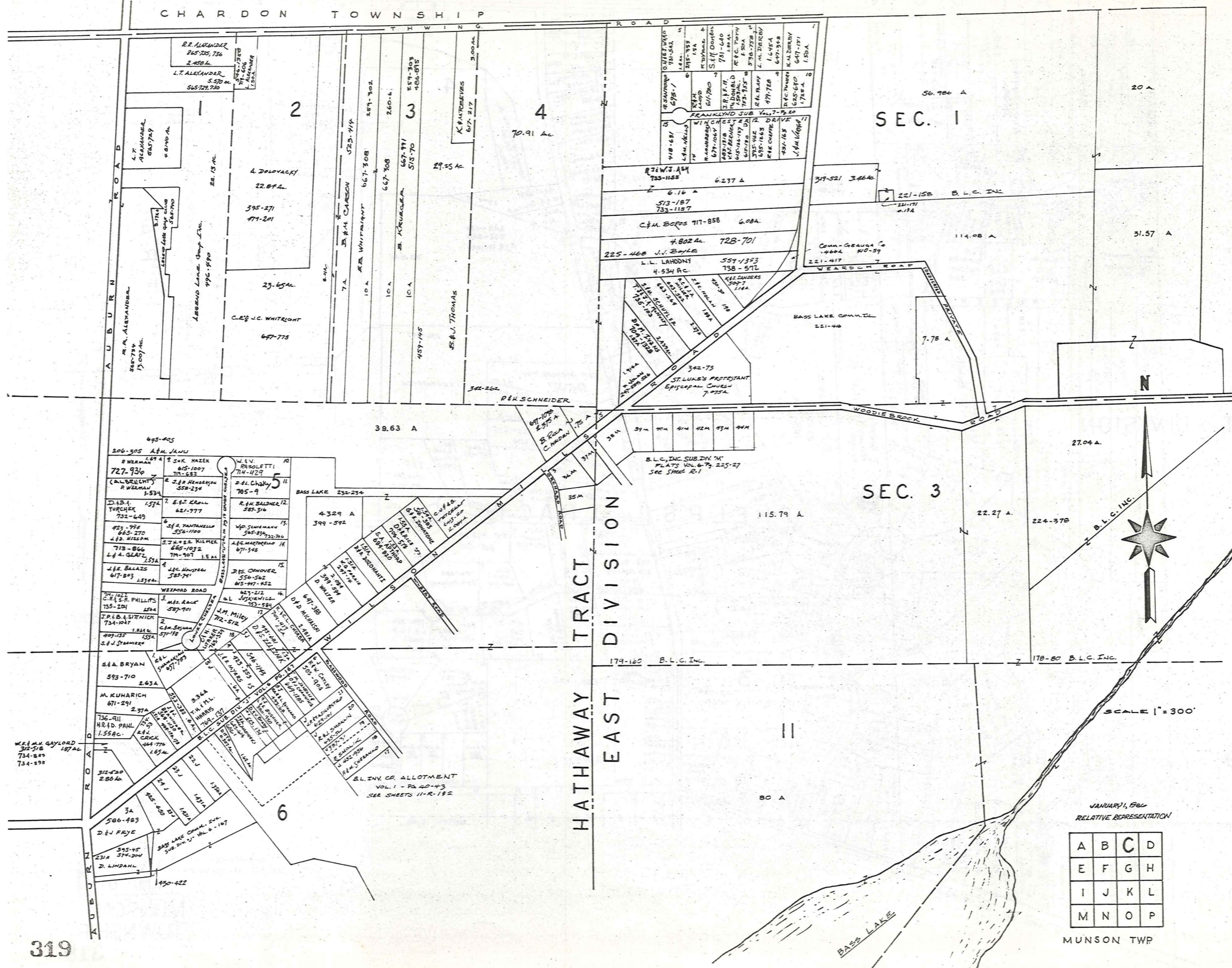
SCALE: 1" = 300'

A	B	C	D
E	F	G	H
I	J	K	L
M	N	O	P

JANUARY, 1986
RELATIVE REPRESENTATION

MUNSON TOWNSHIP
318

C.M. DAVIS SUB. VOL 10 PG 9

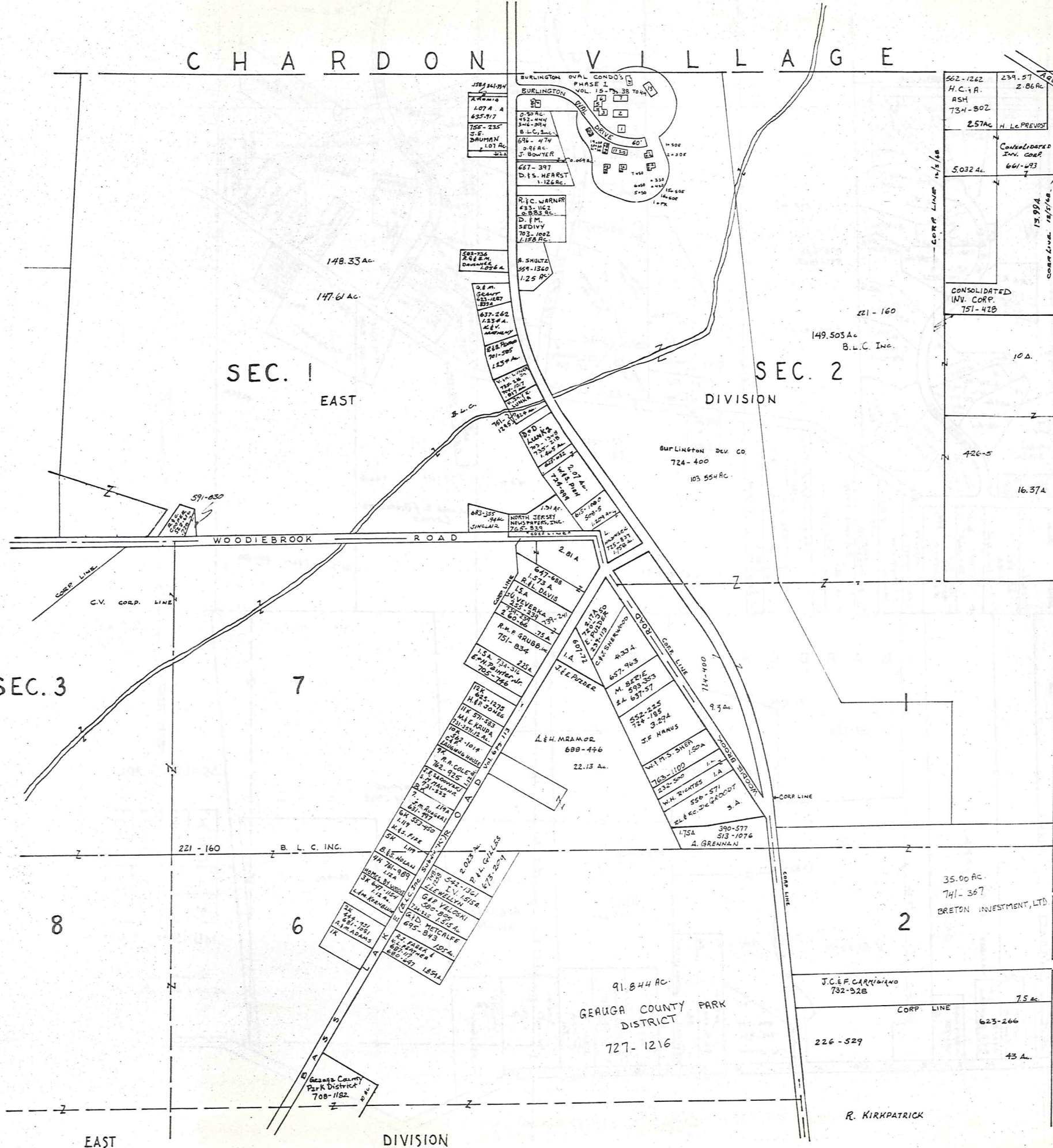


JANUARY 1, 1960
RELATIVE REPRESENTATION

A	B	C	D
E	F	G	H
I	J	K	L
M	N	O	P

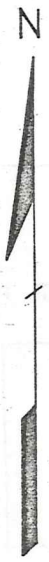
MUNSON TWP

CHARDON VILLAGE HAMBDEN TWP.



- BURLINGTON OVAL CONDO'S - PHASE 1. (VOL. 15. PG. 38):
- 1-(N.O.)-C.K.R. GEE --- 730-647
 - 2-(N.O.)-M.H.F. BURR---742-37
 - 3-(N.O.)-C.K. J. D.J. COTTRILL---733-7
 - 4-(N.O.)-J.H. WEISS, JR. --- 755-715
 - 5-(N.O.)-H.F. B. UNDERLIED, JR. --- 752-851
 - 6-(N.O.)-D.M. KING & P.G. KING --- 751-1196
 - 7-(N.O.)-
 - 13-(N.O.)-G.A. SHIFFLER-- 749-669, 729-1197
- BURLINGTON OF GEUGA CONDO'S - PHASE 2. (VOL. 15. PG. 78):
- 1-(S.O.)-R.M. FINK --- 752-595
 - 2-(S.O.)-CHARDON RUBBER COMPANY--- 755-178
 - 14-(S.O.)-K. KOLASKY --- 745-826
 - 16-(S.O.)-D.M. MATRICARDI & P.J. POLIAK --- 743-799
 - 17-(S.O.)-M.H. ZAMAN --- 742-929
 - 12-(N.O.)-I.D. CESNIK --- 743-700
- BURLINGTON OF GEUGA CONDO'S - PHASE 3. (VOL. 15. PG. 113):
- 18-(S.O.)-D. WINCE --- 754-726
 - 22-(S.O.)-M.H. VACCA --- 755-431
- BURLINGTON OF GEUGA CONDO'S - PHASE 4. (VOL. 15. PG. 139):
- 3-(S.O.)-M.L. SHARABA --- 764-480
 - 4-(S.O.)-F.E. & E.E. REARDENCE --- 766-511
 - 5-(S.O.)-
 - 6-(S.O.)-
 - 7-(S.O.)-
 - 19-(S.O.)-
 - 20-(S.O.)-
 - 21-(S.O.)-
 - 1-(S.O.E.)-E. ZEMLICKA --- 766-506
 - 2-(S.O.E.)-
 - 15-(S.O.E.)-
 - 16-(S.O.E.)-
 - 1-(P.K.)-

CLARIDON TOWNSHIP



SCALE 1" = 300'

A	B	C	D
E	F	G	H
I	J	K	L
M	N	O	P

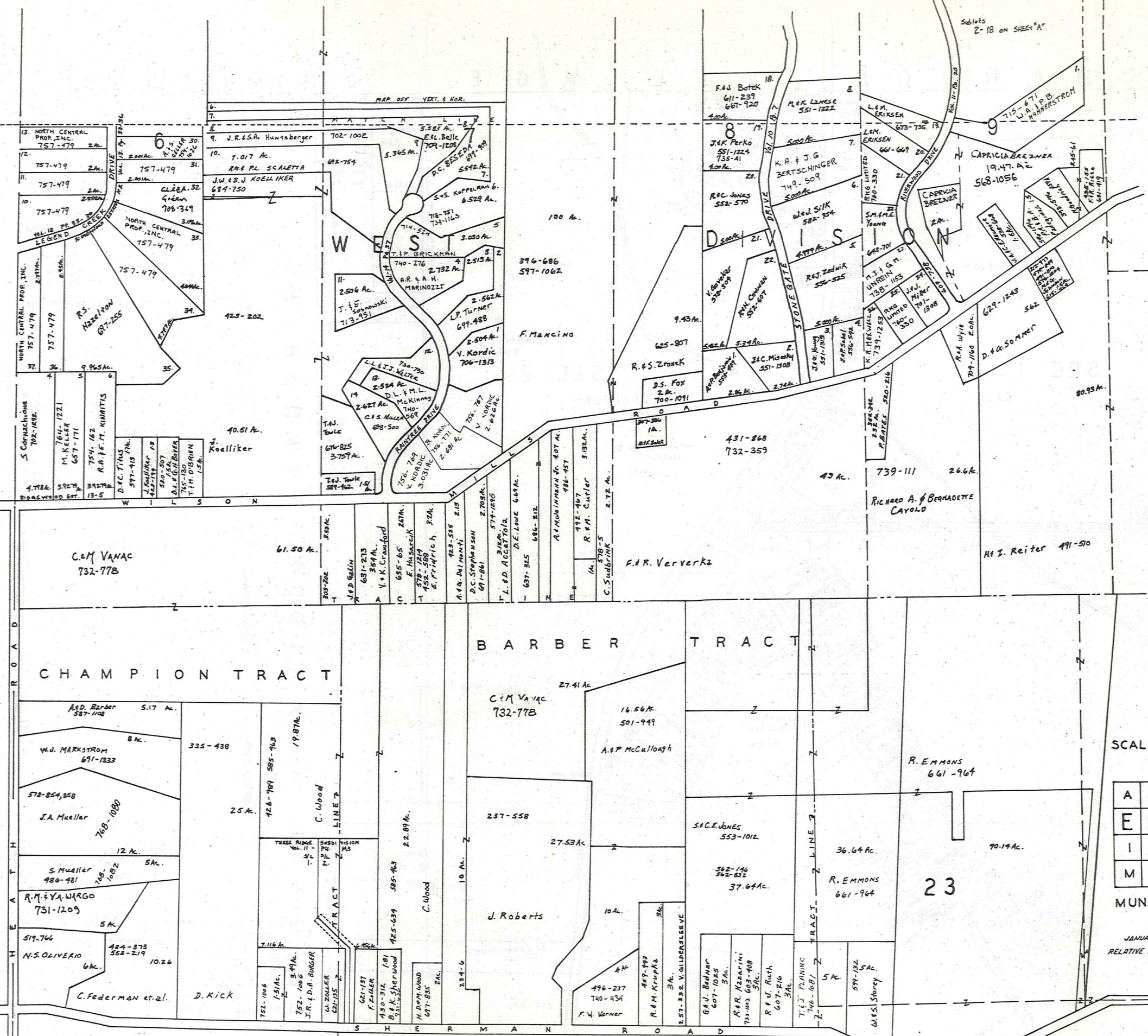
JANUARY 1, 1986
RELATIVE REPRESENTATION

MUNSON TWP

T O W N S H I P

C H E S T E R

C H E S T E R



12



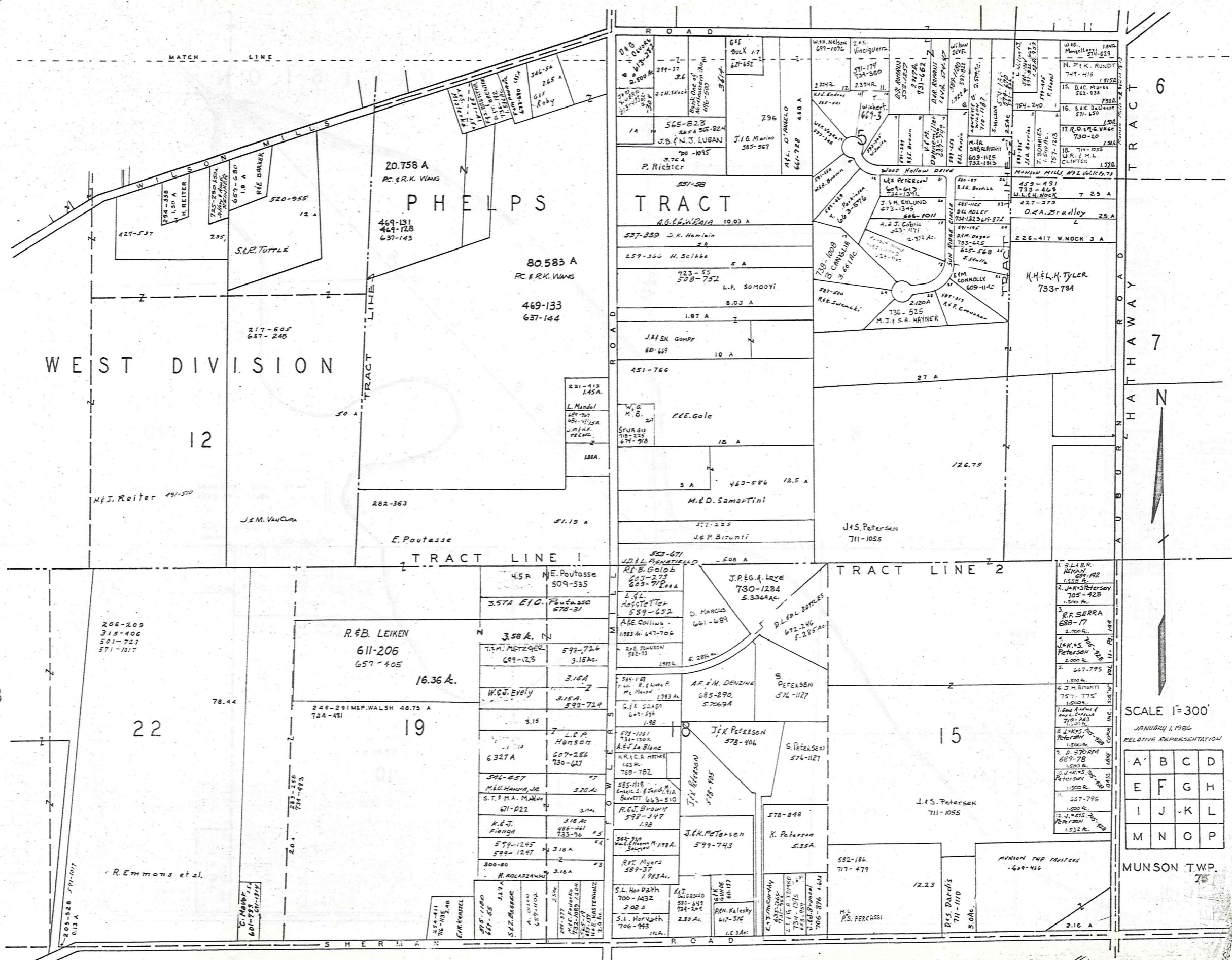
TRACT TWO

SCALE 1" = 300'

A	B	C	D
E	F	G	H
I	J	K	L
M	N	O	P

MUNSON TWP.

JANUARY 1, 1986
RELATIVE REPRESENTATION



MATCH LINE

WEST DIVISION

PHELPS

TRACT

TRACT 6

TRACT 7

TRACT LINE 1

TRACT LINE 2

23

22

19

15

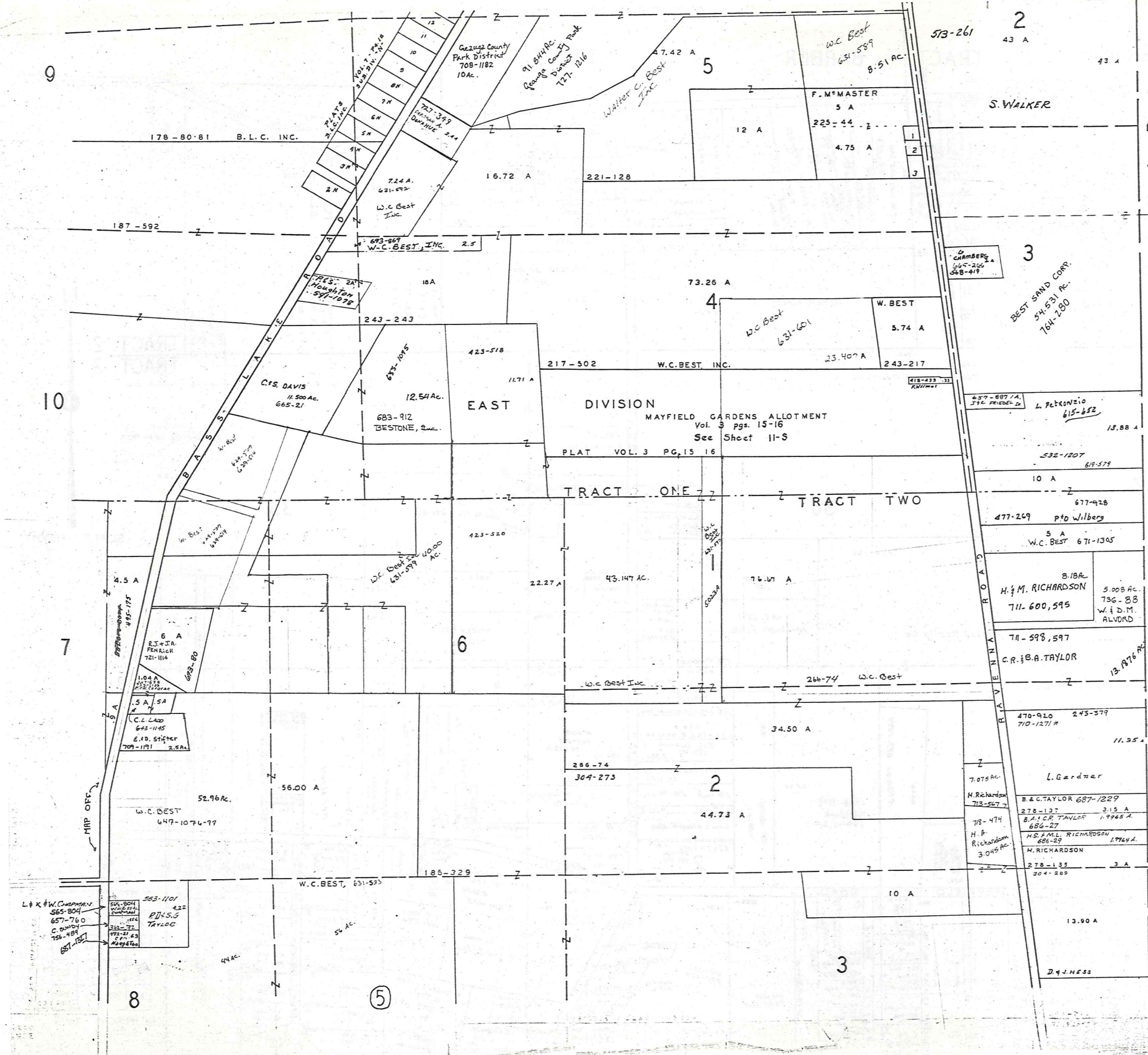
SCALE 1"=300'

JANUARY 1, 1966

RELATIVE REPRESENTATION

A	B	C	D
E	F	G	H
I	J	K	L
M	N	O	P

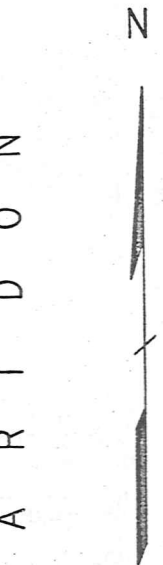
MUNSON TWP.



NEW ORIGINAL LOT LINE
PER PLAT 1870

OLD ORIGINAL LOT LINE
PER PLATS 1830 & 1846

SEE MUNSON TWP.
(PROBLEM AREA) IF



SCALE 1"=300'

JANUARY 1, 1964
RELATIVE REPRESENTATION

A	B	C	D
E	F	G	H
I	J	K	L
M	N	O	P

MUNSON TWP.

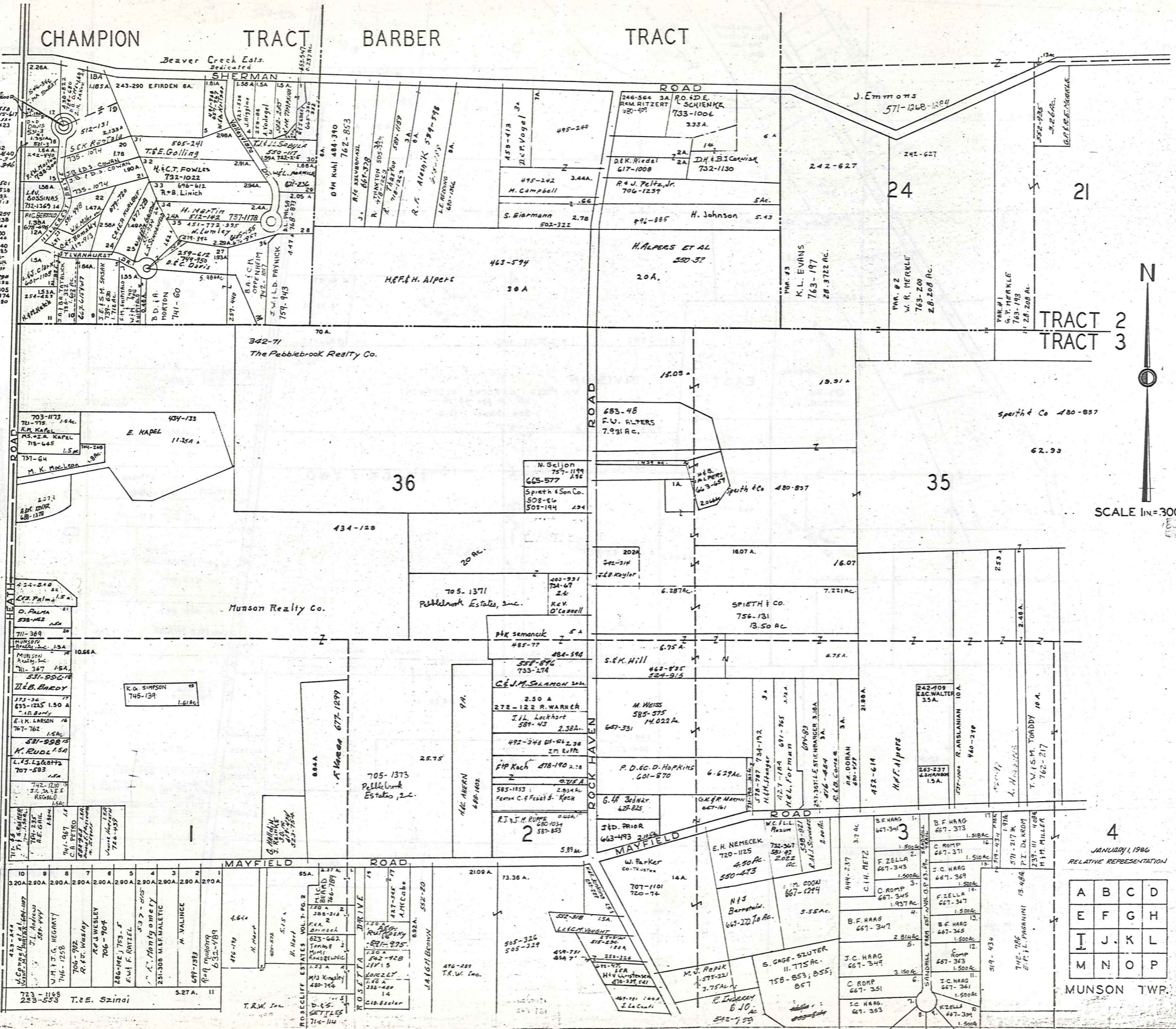
CHAMPION TRACT BARBER TRACT

- 1 D. Temple 243-42
- 2 V. Douse 409-251
- 3 C. W. Stockley 670-511
- 4 J. H. H. Hatch 254-423
- 5
- 6
- 7
- 8
- 9
- 10
- 11
- 12
- 13
- 14 R.M. Davis 239-582
- 15 R.W. Morton 242-440
- 16 J.J. Davis 521-313
- 17 N. Sinner 546-346
- 18
- 19
- 20 L. Nelson 231-201
- 21 R.M. Rayfe 361-510
- 22 S.P. Smith 337-33
- 23 T. H. H. Hatch 417-213
- 24 L.R. Longstreet
- 25 L.W. Confield 331-259
- 26 H. H. Schaefer 417-114
- 27 A. D. D. D. 257-330
- 28 A. D. D. D. 257-140
- 29 K.E. Lighton 435-485
- 30 C. D. D. D. 243-240
- 31 R.E. Gilchrist 215-317
- 32 H. H. H. H. 360-290
- 33 R.E. Sawley 435-638
- 34 J. C. C. C. 259-305
- 35 A. Zekani 259-374
- 36 R.F. Sanders 877-80

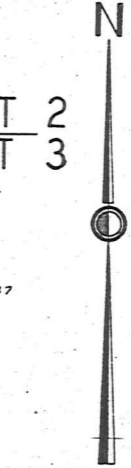
CHESTER TOWNSHIP



VOL. 4 - PG. 33 - 34 VALLEY VIEW ACRES



TRACT 2
TRACT 3

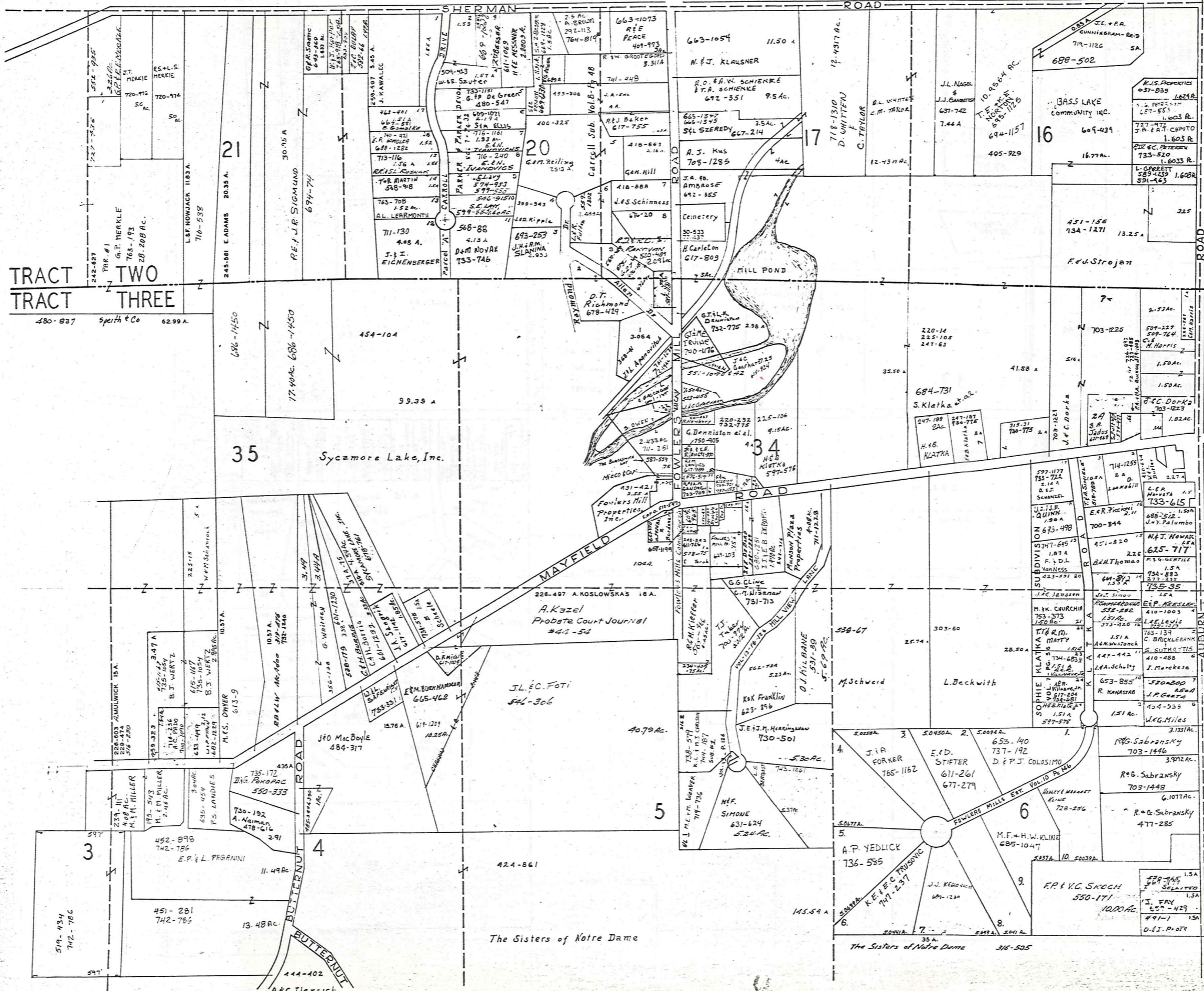


SCALE 1"=300 FT.

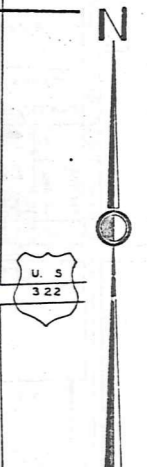
4
JANUARY 1, 1966
RELATIVE REPRESENTATION

A	B	C	D
E	F	G	H
I	J	K	L
M	N	O	P

MUNSON TWP.



1 - Fowler's Mill - 520-467 1st 5A
 2 - Munson Fire Dept. 555-583 1st 3A
 3 - R.C. & B.T. Erickson 467-34 7th 1210

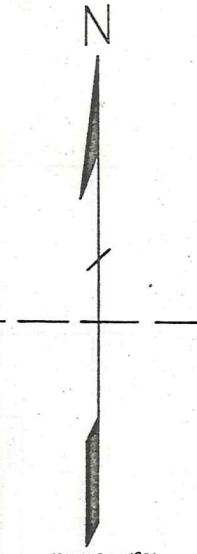
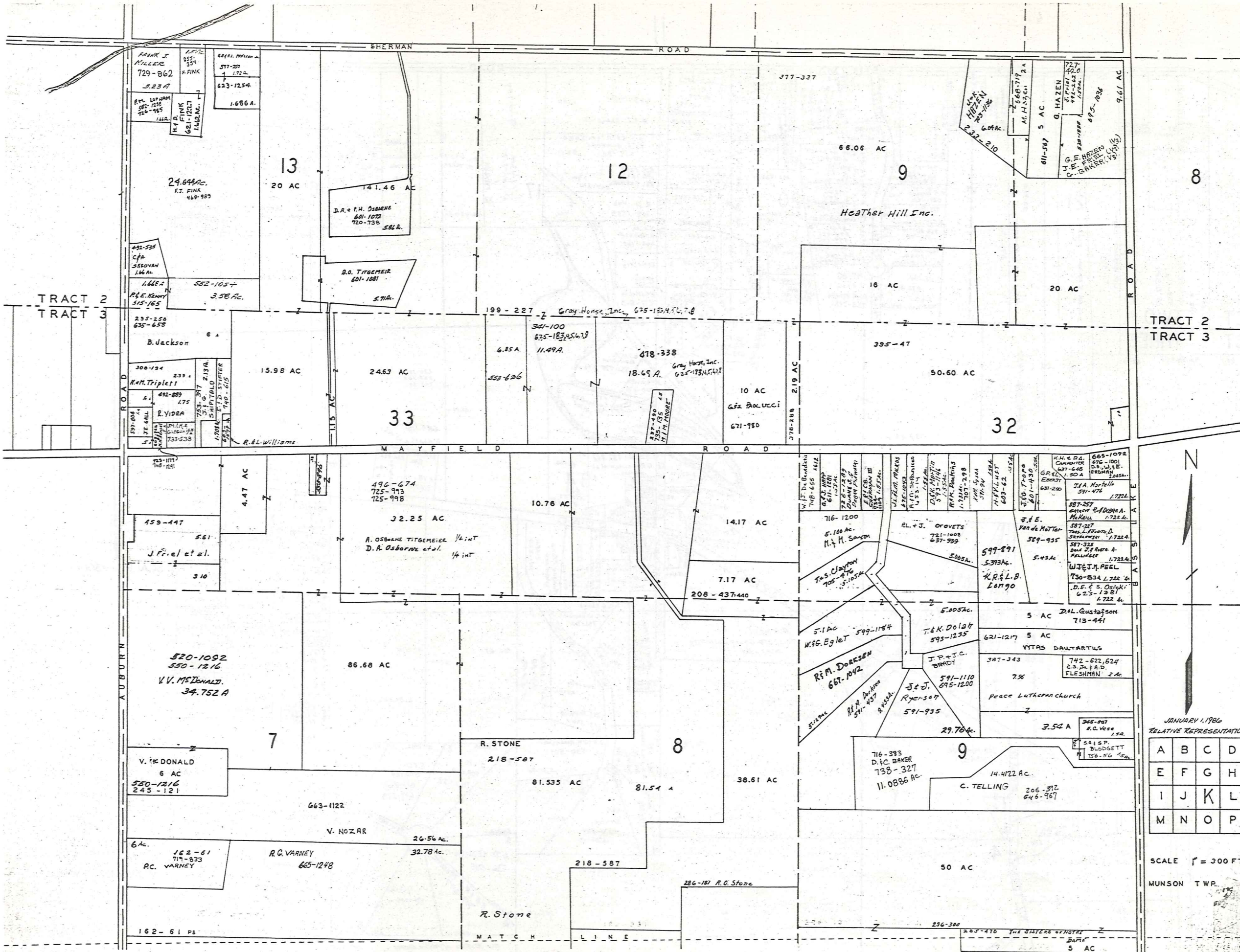


SCALE 1"=300'

JANUARY 1, 1966
 RELATIVE REPRESENTATION

A	B	C	D
E	F	G	H
I	J	K	L
M	N	O	P

MUNSON TWP

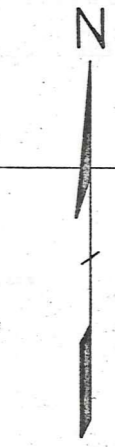
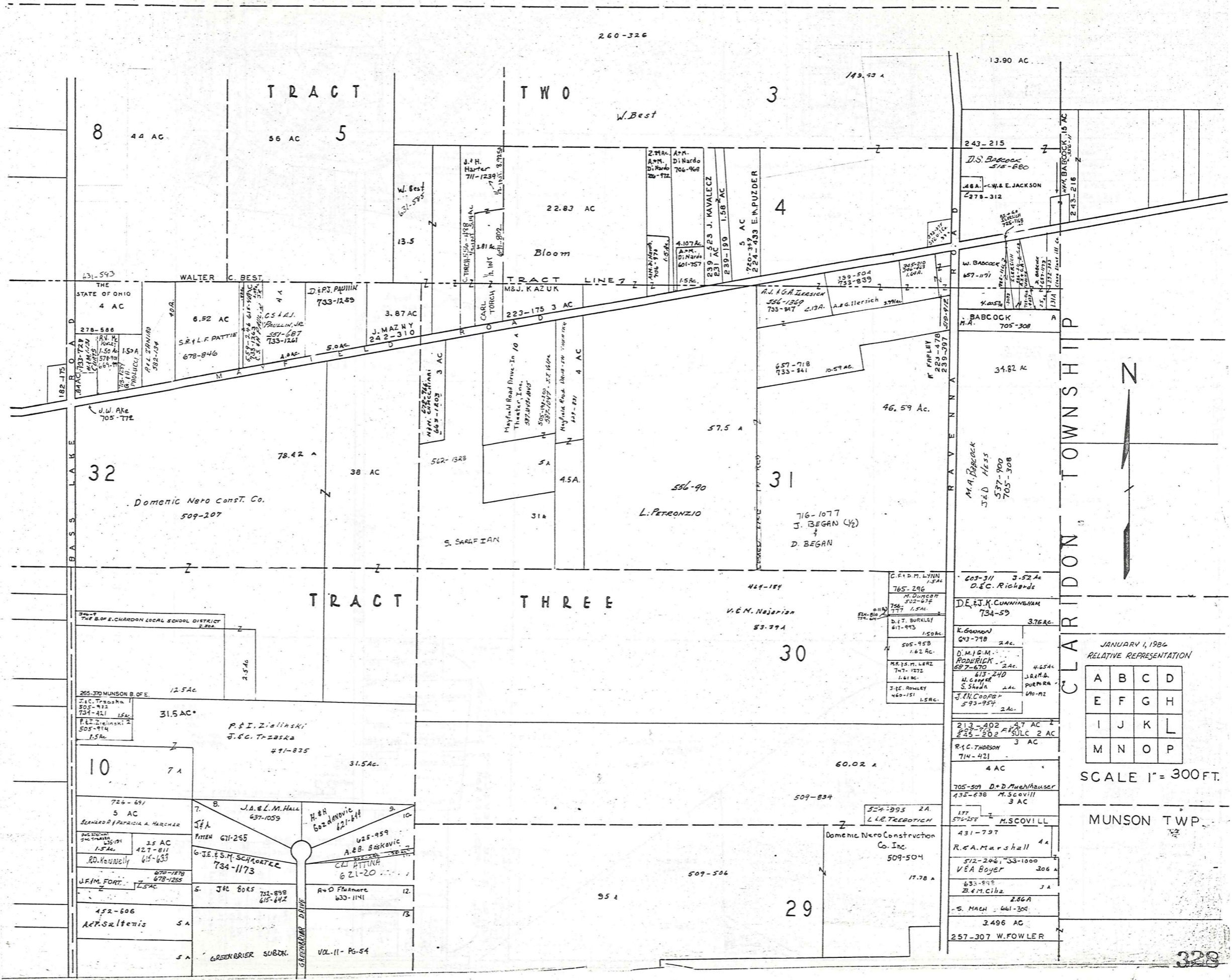


JANUARY 1, 1986
RELATIVE REPRESENTATION

A	B	C	D
E	F	G	H
I	J	K	L
M	N	O	P

SCALE 1" = 300 FT.

MUNSON TWP.



JANUARY 1, 1986
RELATIVE REPRESENTATION

A	B	C	D
E	F	G	H
I	J	K	L
M	N	O	P

SCALE 1" = 300 FT.

MUNSON TWP.

CHESTER TOWNSHIP

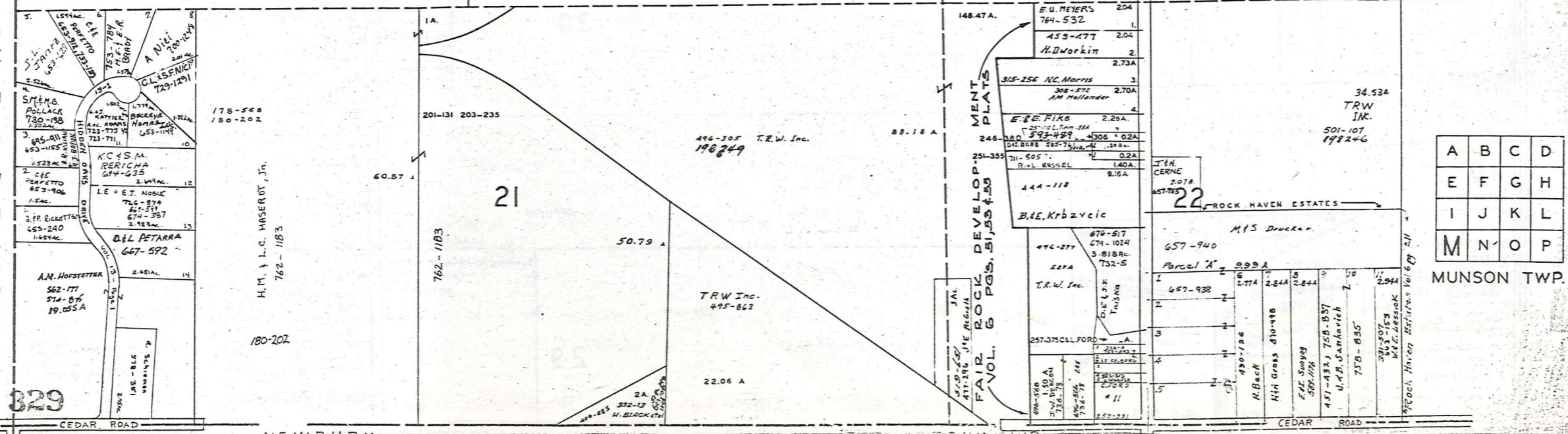
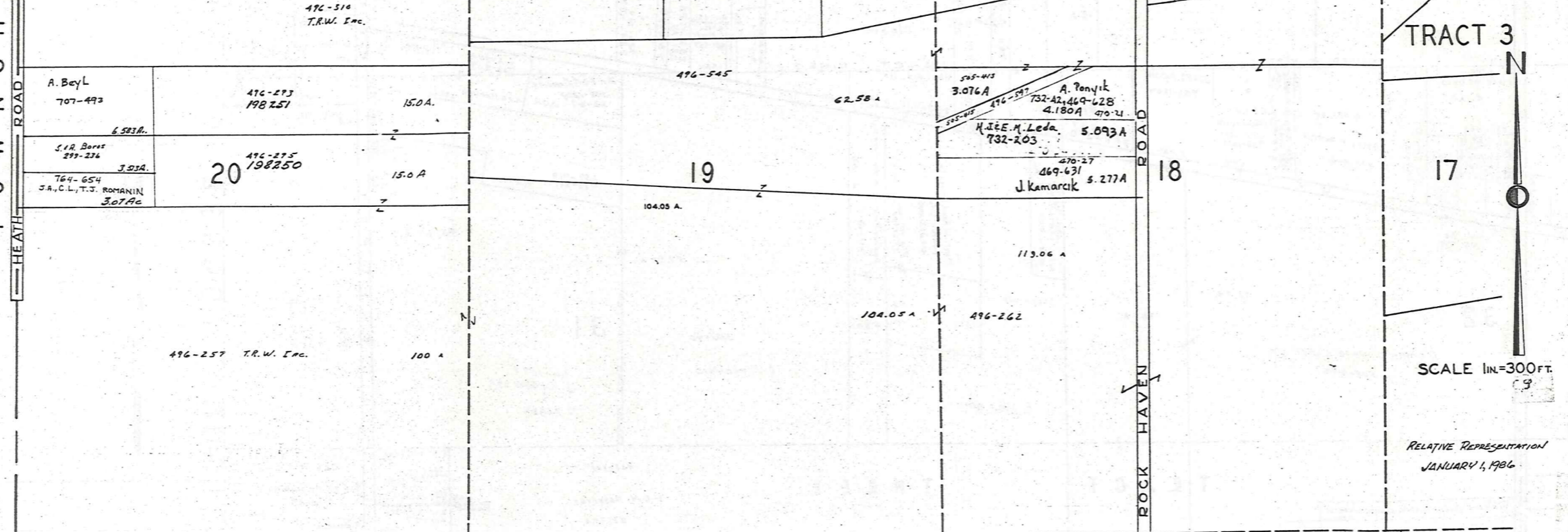
CHESTER

VOL. 4 - PG. 33-34 VALLEY VIEW ACRES

236-46	688-1027	5.27 A.	12
345-350	116 Delaware	5.27 A.	13
609-574		5.27 A.	14
686-377		5.27 A.	15
730-759	H.F. + E.M. KRLLAGE	5.27 A.	16
705-992	B.I.A. Schiffauer	5.27 A.	17
G.L. + S.D. POBUDA		5.27 A.	18
730-153		5.27 A.	19
C.J. Anthony	684-857	5.28 A.	20
C. Anthony	509-340	5.27 A.	21
591-1243	D.P. Weiss	5.27 A.	22
453-335	R.J. Kukuczka	5.32 A.	

ROSELIEFF ESTATES VOL. 7, PG. 2

121 A	473-1251	5.27 A.	12
122 A	507-467	5.27 A.	13
123 A	468-376	5.27 A.	14
124 A	730-514	5.27 A.	15
125 A	400-442	5.27 A.	16
126 A	482-1230	5.27 A.	17
127 A	300-410	5.27 A.	18
128 A	303-608	5.27 A.	19
129 A	303-608	5.27 A.	20
130 A	303-608	5.27 A.	21
131 A	303-608	5.27 A.	22



TRACT 3

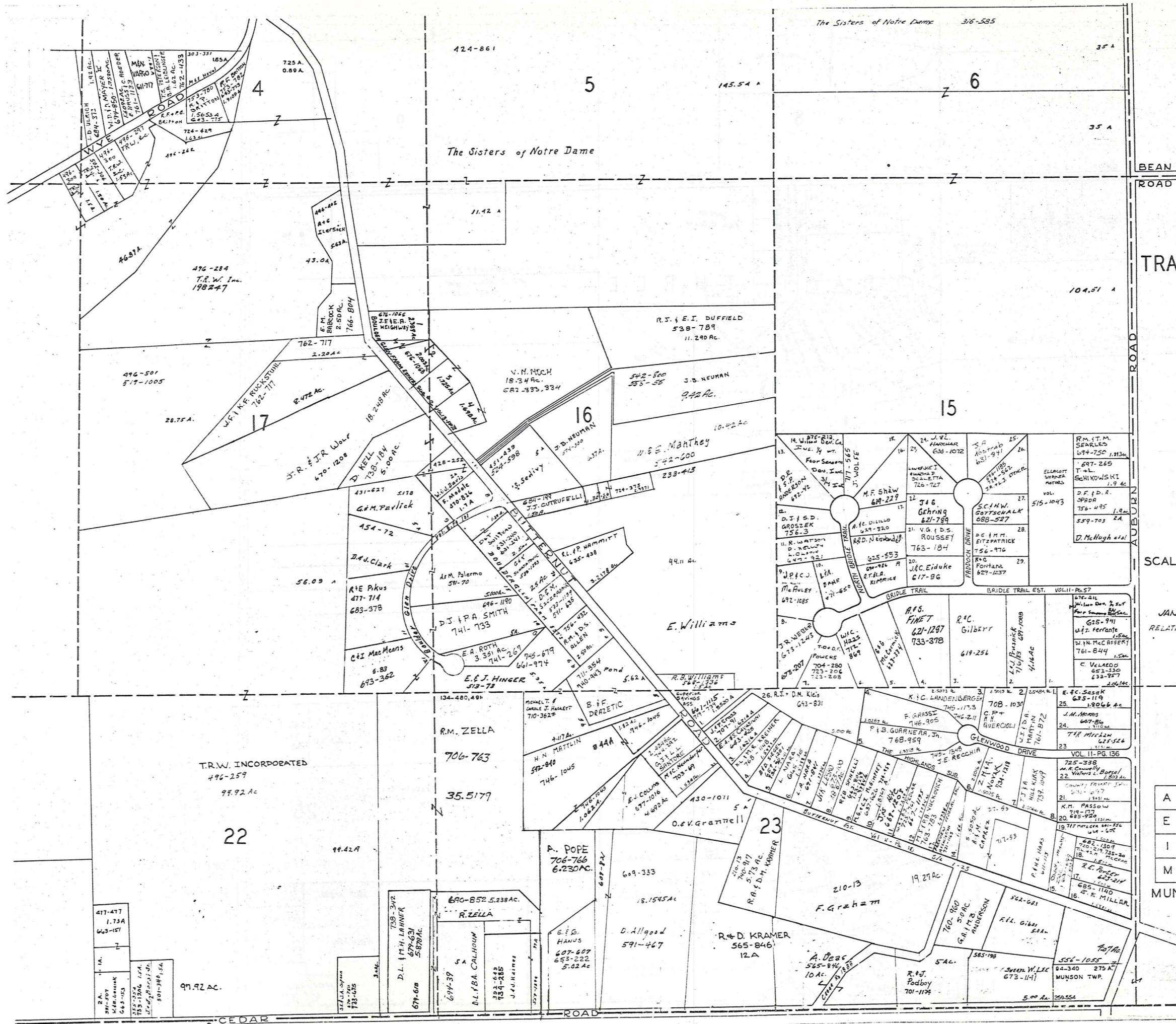
TRACT 4

SCALE 1"=300 FT.

RELATIVE REPRESENTATION JANUARY 1, 1984

A	B	C	D
E	F	G	H
I	J	K	L
M	N	O	P

MUNSON TWP.



TRACT 3

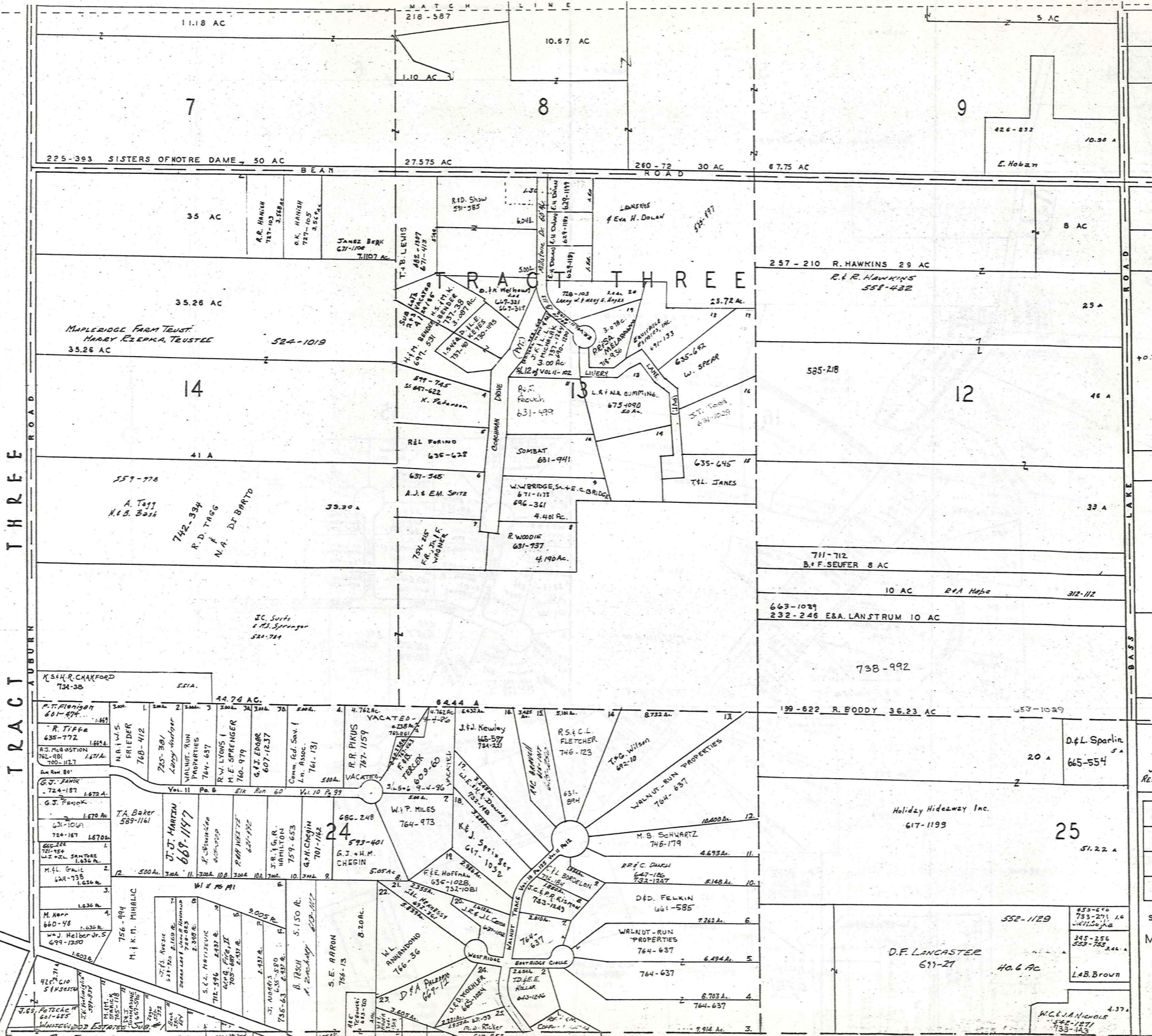


SCALE 1"=300 FT.

JAN. 1, 1985
RELATIVE REPRESENTATION

A	B	C	D
E	F	G	H
I	J	K	L
M	N	O	P

MUNSON TWP.



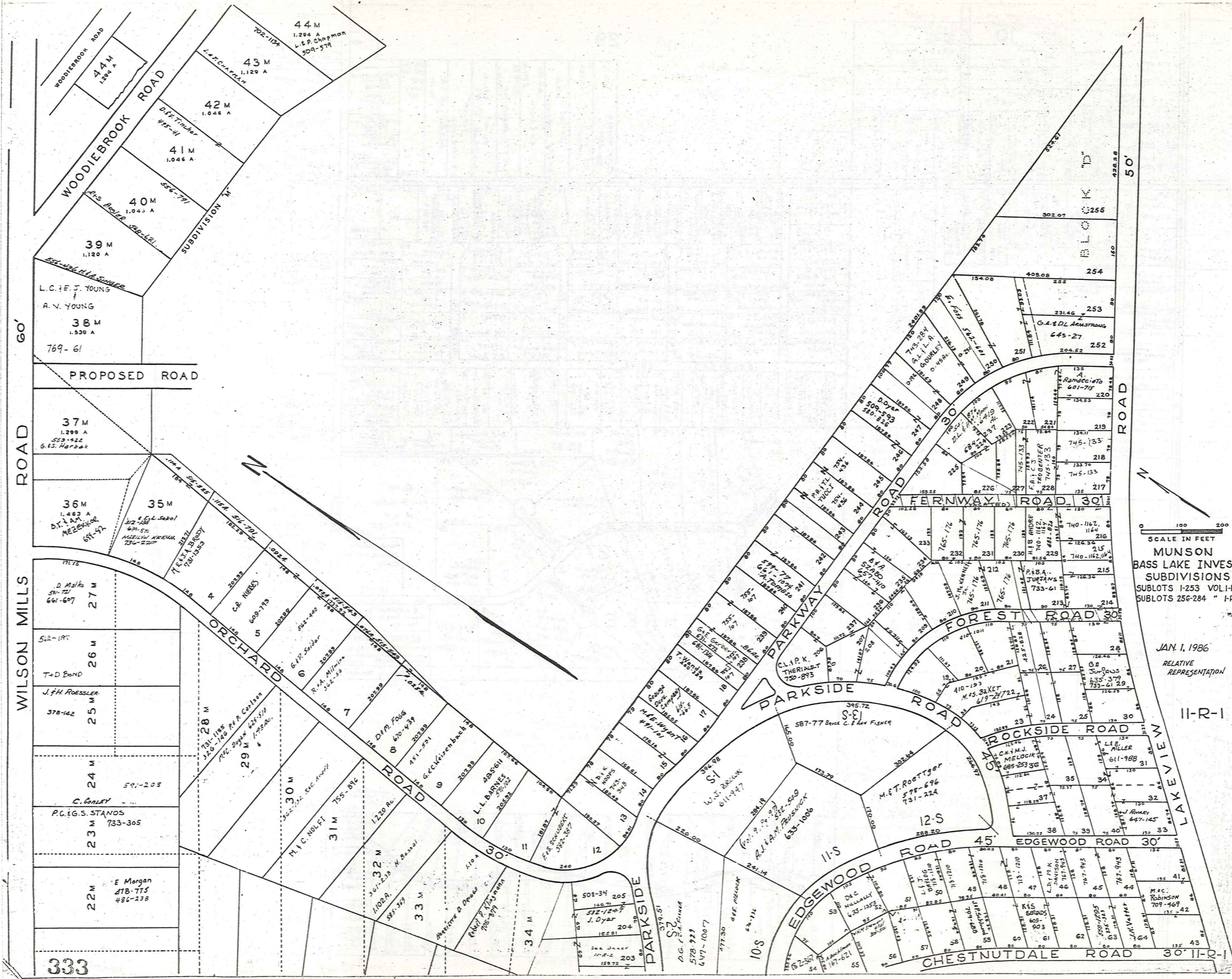
JAN 1, 1986
RELATIVE REPRESENTATION

A	B	C	D
E	F	G	H
I	J	K	L
M	N	O	P

SCALE 1"=300 FT

MUNSON TWP

L.A.B. Brown
4.37
W.C. Nichols
542-1271
733-143

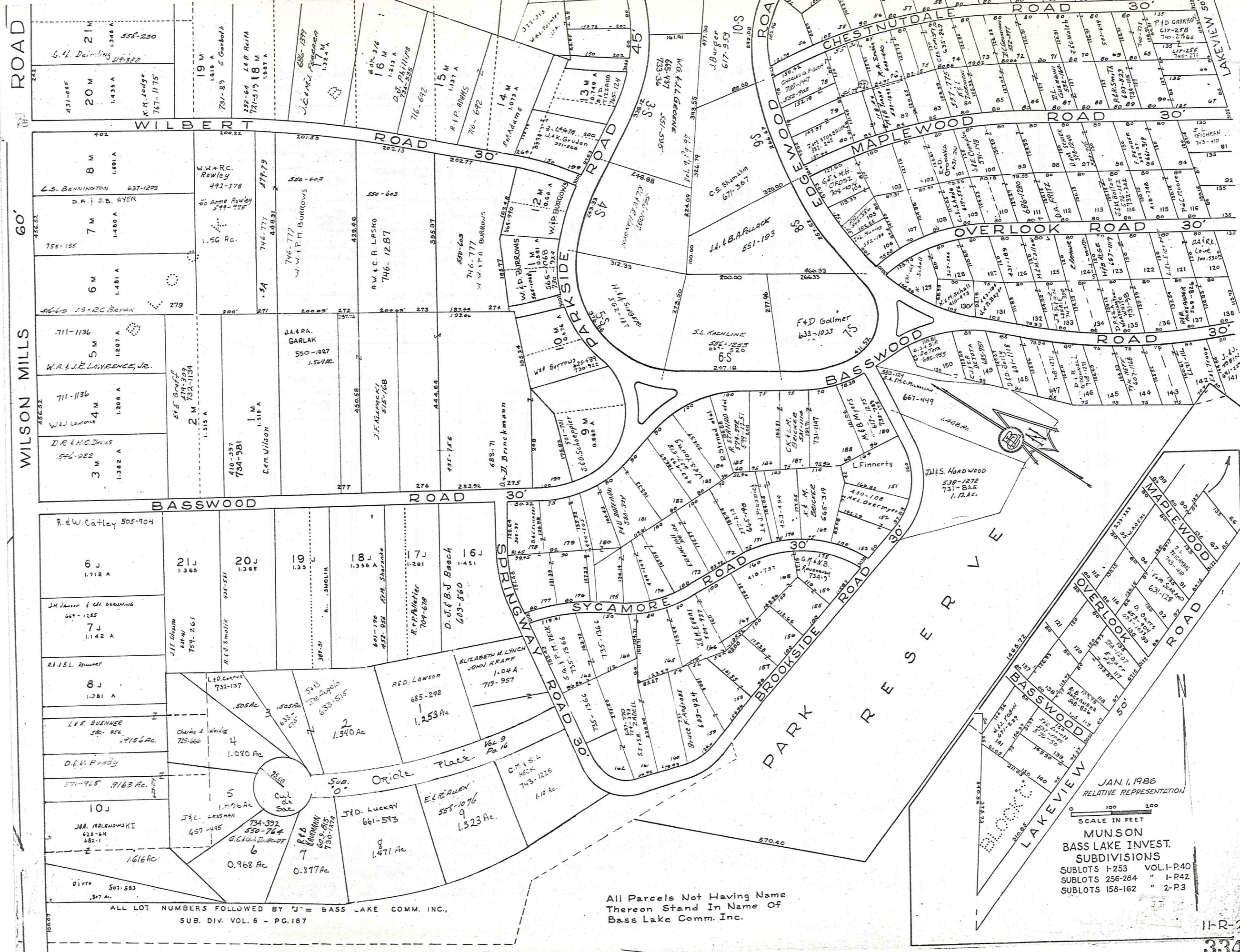


SCALE IN FEET
 0 100 200
MUNSON
 BASS LAKE INVEST.
 SUBDIVISIONS
 SUBLOTS 1-253 VOL 1-P40
 SUBLOTS 256-284 " 1-P42

JAN. 1, 1986
 RELATIVE
 REPRESENTATION

11-R-1

333



JAN. 1, 1986
 RELATIVE REPRESENTATION
 SCALE IN FEET
 0 100 200
MUNSON
BASS LAKE INVEST.
SUBDIVISIONS
 SUBLOTS 1-253 VOL. I-P40
 SUBLOTS 256-284 " I-P42
 SUBLOTS 158-162 " 2-P3

All Parcels Not Having Name
 Thereon Stand In Name Of
 Bass Lake Comm. Inc.

ALL LOT NUMBERS FOLLOWED BY 'J' = BASS LAKE COMM. INC.,
 SUB. DIV. VOL. 6 - PG. 167

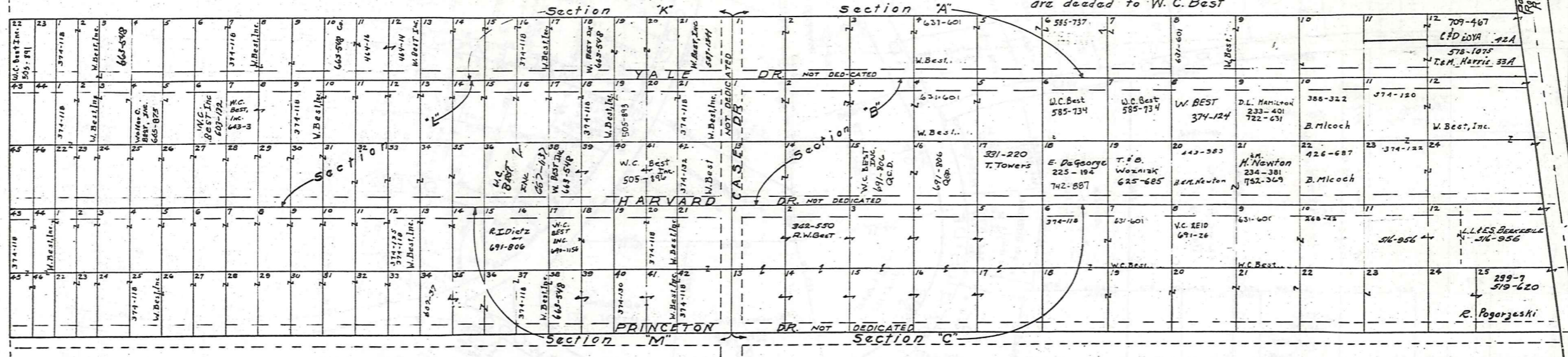
MAYFIELD

GARDENS - Subdivision No 1

Vol. 3 pgs. 15 & 16 (Plats)

Note: All lots not named are deeded to W. C. Best

Scale 1 inch = 100 feet



WALTER C. BEST INC.

SEC. K		SEC. L		SEC. M	
LOT	VOL. & PAGE	LOT	VOL. & PAGE	LOT	VOL. & PAGE
232	434	232	434	232	434
233	434				
234	434				
235	434				
236	434				
237	434				
238	434				
239	434				
240	434				
241	434				
242	434				
243	434				
244	434				
245	434				
246	434				
247	434				
248	434				
249	434				
250	434				
251	434				
252	434				
253	434				
254	434				
255	434				

WALTER C. BEST

SEC. K		SEC. L		SEC. M	
LOT	VOL. & PAGE	LOT	VOL. & PAGE	LOT	VOL. & PAGE
178	640			115	

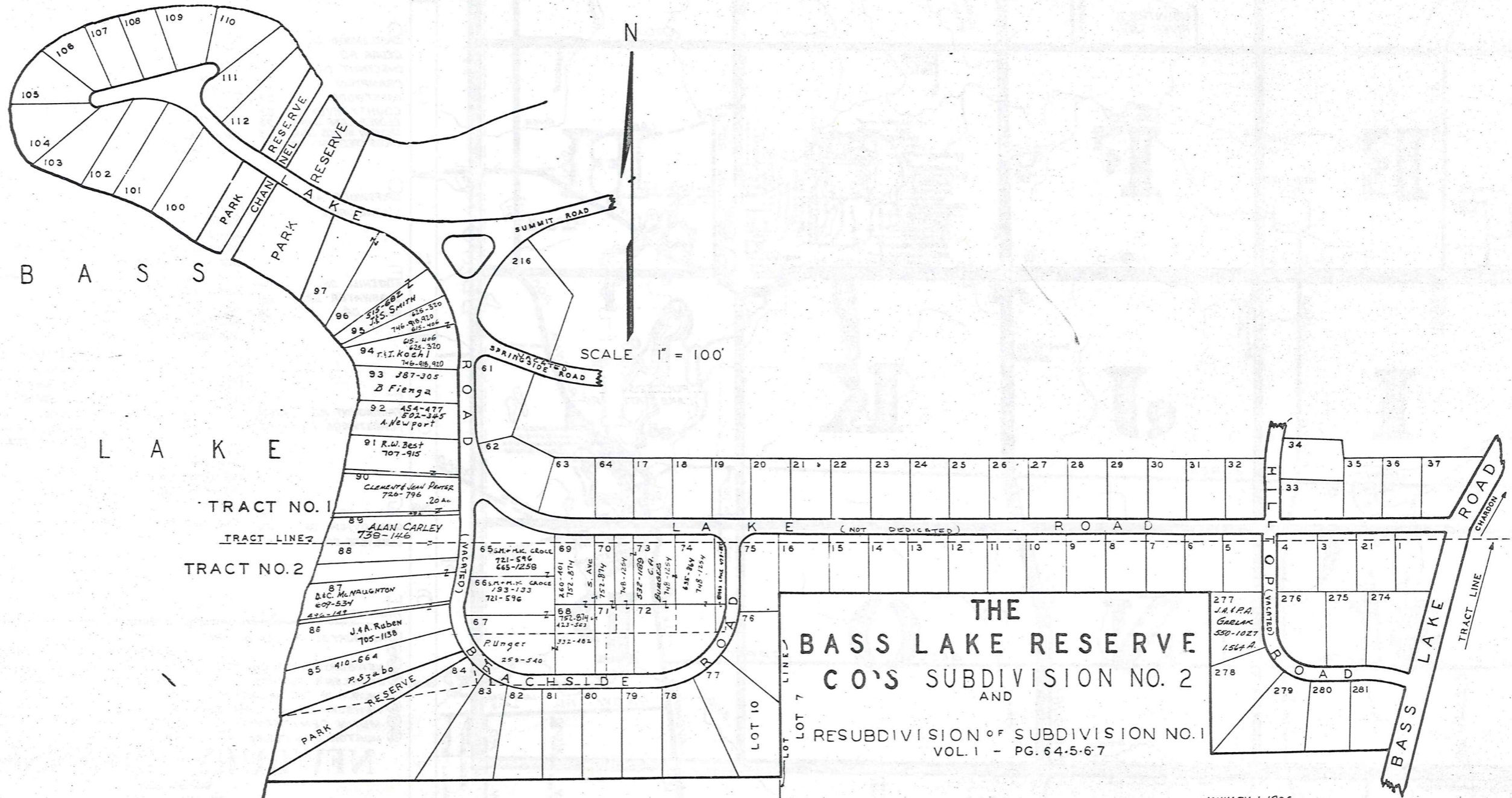
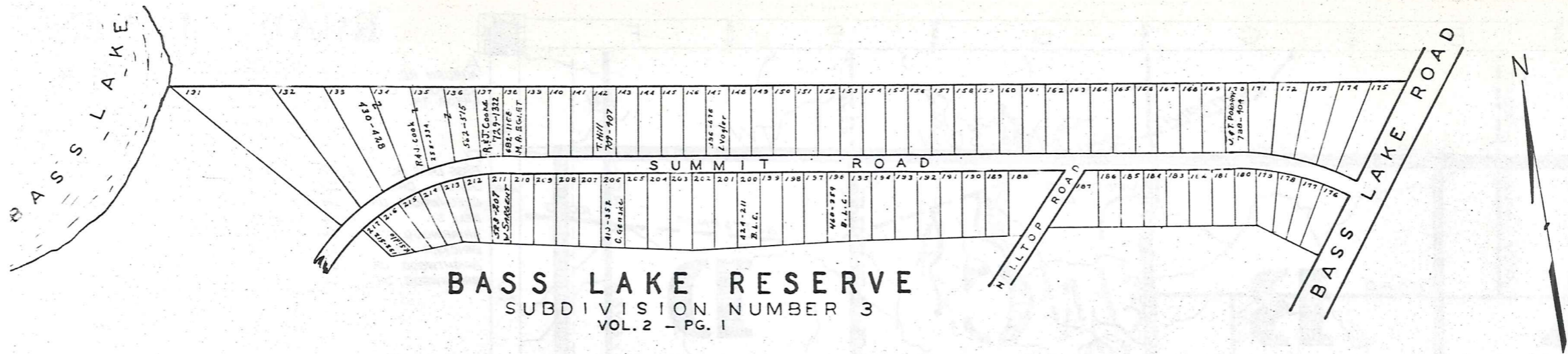
WALTER C. BEST

SEC. A		SEC. B		SEC. C	
LOT	VOL. & PAGE	LOT	VOL. & PAGE	LOT	VOL. & PAGE
232	434	232	434	232	434
233	434			233	434
234	434			234	434
235	434			235	434
236	434			236	434
237	434			237	434
238	434			238	434
239	434			239	434
240	434			240	434
241	434			241	434
242	434			242	434
243	434			243	434
244	434			244	434
245	434			245	434
246	434			246	434
247	434			247	434
248	434			248	434
249	434			249	434
250	434			250	434
251	434			251	434
252	434			252	434
253	434			253	434
254	434			254	434
255	434			255	434

WALTER C. BEST

SEC. A		SEC. B		SEC. C	
LOT	VOL. & PAGE	LOT	VOL. & PAGE	LOT	VOL. & PAGE
11	232	11	232	11	232
12	232	12	232	12	232
13	232	13	232	13	232
14	232	14	232	14	232
15	232	15	232	15	232
16	232	16	232	16	232
17	232	17	232	17	232
18	232	18	232	18	232
19	232	19	232	19	232
20	232	20	232	20	232
21	232	21	232	21	232
22	232	22	232	22	232
23	232	23	232	23	232
24	232	24	232	24	232
25	232	25	232	25	232
26	232	26	232	26	232
27	232	27	232	27	232
28	232	28	232	28	232
29	232	29	232	29	232
30	232	30	232	30	232
31	232	31	232	31	232
32	232	32	232	32	232
33	232	33	232	33	232
34	232	34	232	34	232
35	232	35	232	35	232
36	232	36	232	36	232
37	232	37	232	37	232
38	232	38	232	38	232
39	232	39	232	39	232
40	232	40	232	40	232
41	232	41	232	41	232
42	232	42	232	42	232
43	232	43	232	43	232
44	232	44	232	44	232
45	232	45	232	45	232
46	232	46	232	46	232
47	232	47	232	47	232
48	232	48	232	48	232
49	232	49	232	49	232
50	232	50	232	50	232
51	232	51	232	51	232
52	232	52	232	52	232
53	232	53	232	53	232
54	232	54	232	54	232
55	232	55	232	55	232
56	232	56	232	56	232
57	232	57	232	57	232
58	232	58	232	58	232
59	232	59	232	59	232
60	232	60	232	60	232

RELATIVE REPRESENTATION
JAN 1, 1986



JANUARY 1, 1926
RELATIVE REPRESENTATION

Explanation and Use Sheet for Geauga County, Ohio

SAMPLE (PARTIAL) COUNTY INDEX MAP



- Township Boundary
- Township Name
- Village Boundary
- Village Name
- Tract Lot Number
- Street Name
- Acreage
- Deed Book & Page
- Owners Name
- Denotes Continous Ownership

SAMPLE (PARTIAL) MAP PAGE



- Map Page Number
- Village Name
- Village Boundary
- Township Name

SAMPLE (PARTIAL) MUNICIPALITY INDEX MAP



- Street Name
- Village Name
- Township Name

USE OF THE MAP VOLUME

1. LOCATE THE GENERAL AREA OF INTEREST ON THE COUNTY INDEX MAP, ATLAS PAGE 'B', AND NOTE THE MUNICIPALITY NAME (TOWNSHIP OR VILLAGE).
2. REFER TO THE TABLE OF CONTENTS, ATLAS PAGE 'C', AND NOTE THE BEGINNING ATLAS PAGE NUMBER FOR THE MUNICIPALITY OF INTEREST.
3. TURN TO THE PAGE INDICATED. ON THIS PAGE WILL APPEAR AN INDEX MAP FOR THAT MUNICIPALITY.
4. LOCATE THE GENERAL AREA OF INTEREST AND NOTE THE MAP PAGE NUMBER. THIS MAY BE EITHER A LETTER OR A NUMBER.
5. MAP PAGES ARE IN ALPHABETICAL (OR NUMERICAL) SEQUENCE FOLLOWING THE MUNICIPALITY INDEX MAP. FOLLOW SEQUENCE TO THE MAP PAGE INDICATED.
6. LOCATE SPECIFIC PARCEL OF INTEREST AND NOTE THE DESIRED INFORMATION.

NOTE: ON SOME MAPS YOU MAY BE REFERRED TO A DETAIL SHEET SHOWING AN ENLARGEMENT OF THE AREA. THESE MAPS ARE FOUND AT THE END OF THE REGULAR MAP PAGES IN EACH MUNICIPALITY IN EITHER ALPHABETICAL OR NUMERICAL SEQUENCE.

NOTE: CHARDON VILLAGE HAS TITLE SHEETS. TO LOCATE OWNERS NAME, NOTE THE PARCEL NUMBER, REFER TO THE TITLE PAGE FOLLOWING THE MAP OF INTEREST, FOLLOW NUMERICAL SEQUENCE TO THE PARCEL NUMBER OF INTEREST AND NOTE THE DESIRED INFORMATION. IN ALL OTHER MUNICIPALITIES THE OWNERS NAME APPEARS ON THE MAP PAGE.

This book is the property of REAL ESTATE DATA, INC. and is distributed by REDI under a leasing arrangement requiring return to REDI upon termination of the lease. REDI reserves the right to reclaim this book if found in the possession of any firm or person where possession was obtained through any unauthorized source.